

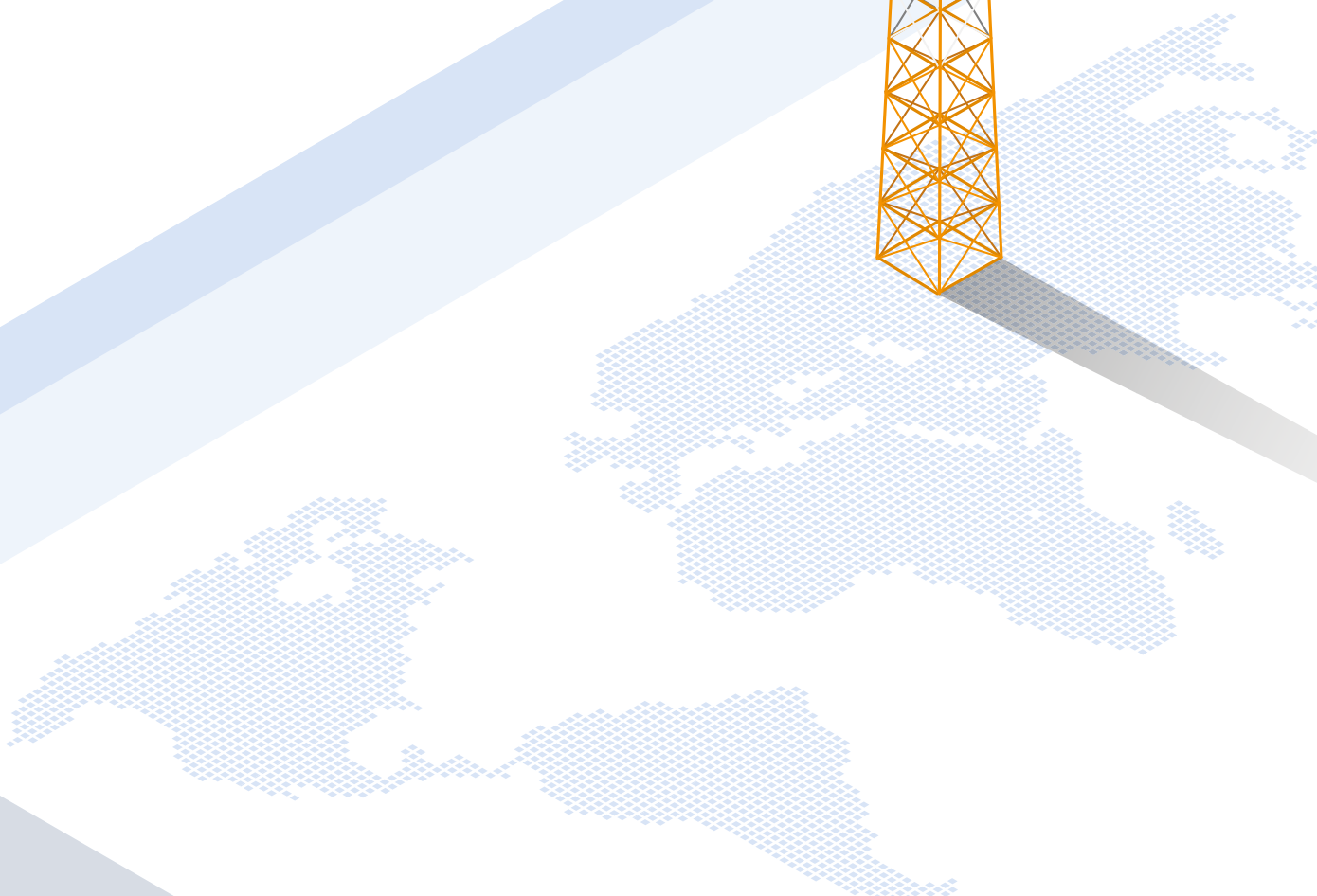
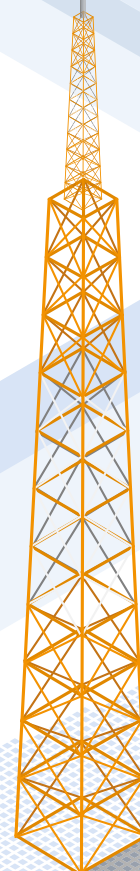
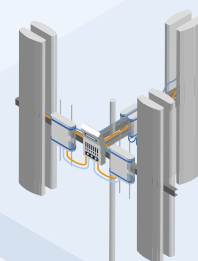


daisy.

COMMUNICATIONS

# daisy. Anywhere

A product guide to Daisy Anywhere  
from **Daisy Communications**

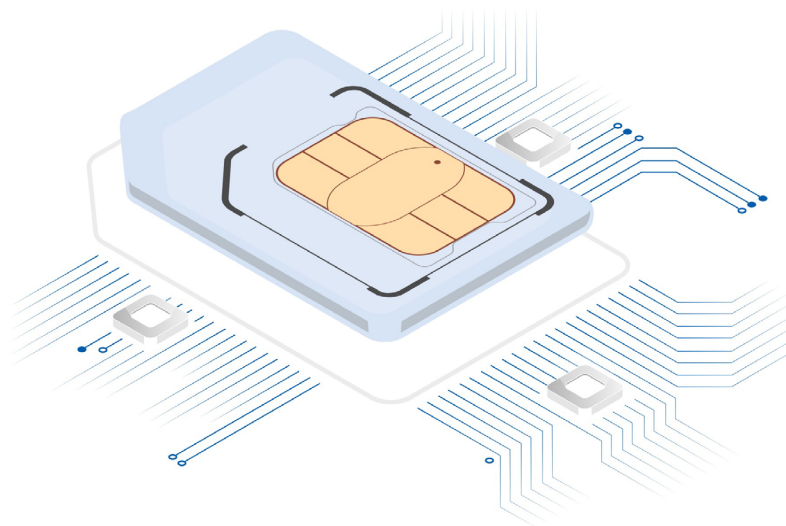


# I Daisy IoT

## Our IoT ecosystem

From fleet management to smart fridges. Daisy IoT provision keeps devices connected anywhere.

Daisy IoT is based on Daisy Anywhere's Multi-network 4G SIMs. Giving you truly global coverage, completely unsteered from an MNO's preferred network, and all on flexible tariffs. Plus, you can be sure there's an IoT solution that fits your needs. As we also offer LPWAN options such as SigFox and LoRa. No matter your industry, if you're looking for IoT provisioning, Daisy IoT has a solution that fits.



### Static IPs

A SIM card's variable IP can put a full stop in your efforts to connect up secure IoT networks. But with Daisy IoT, we offer the option of static IP addresses on your cards. So you can access your devices anywhere, and connect them over a VPN or another encrypted service.



### Stay Connected

Our cellular data connectivity is provided on unsteered multi-network SIMs. In the UK that covers all four of the major network providers. And because they're completely unsteered they'll automatically connect to the strongest signal, not some MNO's preferred option.



### Make the most of your data AND Avoid Overage

Aggregate all your data into a single shared pool, so you don't need to worry about having loads of separate usage caps. And with flexible tariffs and bespoke data tiers, alongside a full managed real-time usage portal you can easily avoid overage.



### Global IoT

With 650 networks on board in 180 countries across Europe and the world, your devices will stay connected to the strongest network no matter their location.

# Perfect for:

## Manufacturing

Human-to-Robot Collaboration  
Remote and predictive maintenance  
Digital Twinning

## Healthcare

Remote patient monitoring  
Disease management  
On the move triage

## Retail

Supply chain optimisation  
Automated checkouts  
Smart inventory management

## Entertainment/Media

Connected Haptics  
Esports  
In-car entertainment

## Financial Services

Mobile Banking and wearable devices  
Remote Tellers  
Personalised AI Financial Assistants

## Energy

Smart buildings, street lighting & energy grids  
Remote management of renewable energy equipment  
Hazard and maintenance sensing

## Mobility/Transport

Vehicle to Vehicle Communication  
Predictive maintenance and monitoring  
Smart traffic control



# I Daisy Anywhere Protect

Since the early days of the internet, connectivity has always come with risks. And cellular connectivity is no different.

**That's where Daisy Anywhere Protect comes in.** You can protect any of your users on a Daisy Anywhere product with an extra layer of security.

It provides intelligent filtering and blocklists set at the network level, so your devices can't circumvent your security to access forbidden sites. Removing the risk of your users compromising their devices, or even the whole network, by unintentionally visiting websites that host malware, viruses, and phishing scams.



## Customisable Access

Set exactly what you want users to access on the Internet and when. And add policies that grant access by users, groups, or even time of day.



## Up to date protection

Use regularly updated content lists from the IWF and CTIRU to comply with government policies.



## Network Level Priorities

Completely customisable Internet filtering on the Network level. It's compatible with all mobile devices or any of our managed connectivity solutions.



## Fully Manageable

Visualise your activity in real time; generate and schedule detailed reports; manage access and activity; all from a single platform.

## Perfect for:

- Schools and education
- Government offices
- Healthcare
- Aviation
- Private businesses

## You also get:

- Fully compliant with organisations such as Ofsted
- Meets and exceeds policies such as CIPA, Prevent Duty Guidance, and the Safer Schools Initiative.
- Available across the Globe
- End-to-end support

