

Basic and Superfast Broadband quick start guide



To get up and running, plug in your router and follow these steps. Before you start, check which type of telephone socket you have by looking at the diagrams below.

STEP 1 Connection types

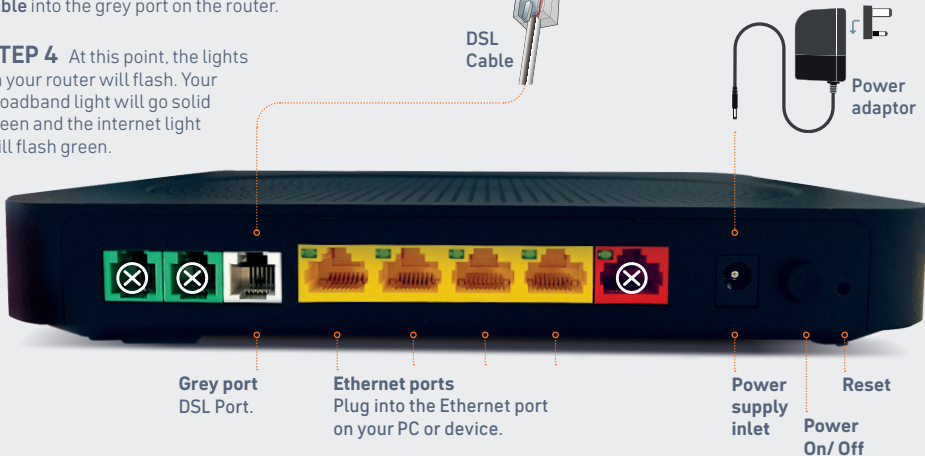
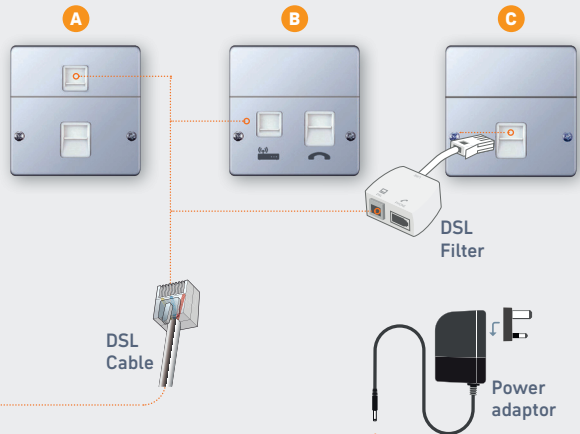
Look at your telephone socket.

- Socket styles **(A)** and **(B)** - No DSL filter needed.
- Socket style **(C)** - DSL filter essential.

STEP 2 Plug the **DSL cable** directly into the sockets illustrated on either Socket A or B, or into the DSL filter for Socket C.

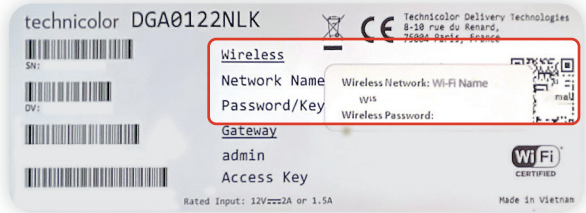
STEP 3 Plug the other end of the **DSL cable** into the grey port on the router.

STEP 4 At this point, the lights on your router will flash. Your broadband light will go solid green and the internet light will flash green.



First things first

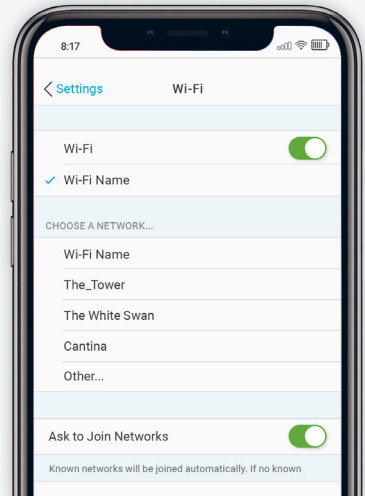
Your wireless settings are underneath your router.



Setting up wireless connectivity

Connecting all your devices to your new connection is easy. Just follow these simple steps:

- 1 First, check that the Wi-Fi light on the router is illuminated.
- 2 Using your wireless enabled device, such as a laptop, smartphone or tablet, search for your available wireless networks.
- 3 From the list of available wireless networks, select the specific 'Wi-Fi Name' found on your wireless settings sticker underneath your router and then enter your unique password found on the same sticker.



Here to help

If you're having any technical issues, we're here to help.

Visit: <https://daisyscomms.co.uk/help-support>

Call: 0333 320 0999